

ROYAL COLLEGE OF MUSIC MUSEUM EDUCATIONAL PROGRAMME INFORMATION PACK

November 2025

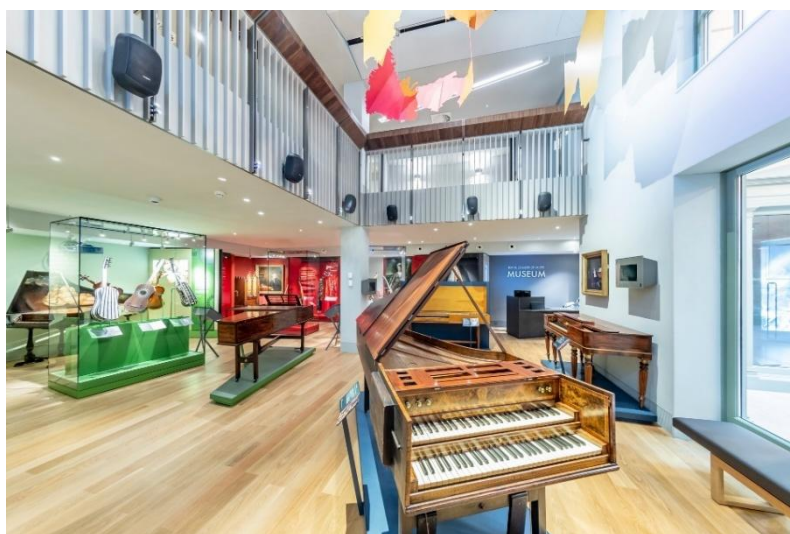


The Educational Programme from the Royal College of Music Museum comprises a guided tour or storytelling journey through the Museum Gallery, showcasing the Museum's permanent collection, allowing participants to explore 500 years of music history.

Highlights include discover the oldest surviving stringed keyboard instrument ([Clavicytherium, c. 1466](#)) and the oldest known guitar ([Belchior Dias, Lisbon, 1581](#)) in the world.

These elements are integral to our Educational Programmes which are tailored for school-age groups, suitable for Key Stages 1 to 5 (year 1-13, ages 5-18), and aligned with the subject aims of the National Curriculum, as well as learning groups from overseas and international schools.

Each session will include listening to musical examples from the RCM Museum collections across various eras and genres, alongside object-handling and interactive learning activities in the Museum's Education Space, the Weston Discovery Centre.



Why visit the Royal College of Music Museum?

The Royal College of Music Museum houses one of the richest collections of music-related objects in the UK and Europe. Visit us to discover the oldest earliest surviving stringed keyboard instrument [Clavicytherium, c. 1466](#) and the oldest known guitar ([Belchior Dias, Lisbon, 1581](#)) in the world, explore our fascinating displays of musical instruments, paintings and objects that cover more than five centuries of music-making.

We aim to create a vibrant space for learning, supporting an understanding of music through our objects and stories. Across our range of activities and resources for schools, we use our heritage collections as a springboard for creativity and inspiration for young people.

Our Education Programmes for schools have been co-created by Education professionals and teachers, and are supported by talented Royal College of Music students, all with appropriate DBS checks and trained to work with groups of all ages.



How to book?

[Educational Programme Booking Form](#)

Programme Days:	Every Tuesday & Thursday
Time:	Between 10.30am–4pm
Length:	60 minutes

To book an Educational Programme, please fill out the form in the box above or from the link below. You will receive an email once your session is confirmed.

<https://forms.office.com/e/mfpVRWCq0>

We sponsor a number of Educational Programmes for local state schools each academic year, please indicate your request on the booking form if this is required. For more information about the sponsorship criteria, [please visit the end of the booklet](#).

Please do not hesitate to contact museum.programmes@rcm.ac.uk for further information.

Key Stage 1 (Year 1-2, Age 5-7)

Topic: Explore – How would you play the instruments?

Capacity: maximum 30 students

Supervision: 1:6

Cost: £75 (including VAT), up to 5 educators may attend free of charge

Duration/Logistics: 60 mins. Classes will be split into two groups of 15. Each group will rotate after 30mins so that students experience both a Museum Gallery tour and interactive learning activities in the Weston Discovery Centre.

Session Summary: Explore how we utilise our bodies to play musical instruments by joining the Museum Gallery tour. Students will learn from the RCM Museum collections, enhanced by a storytelling journey, through listening to musical examples and interactive activities. Students will discover the connection between body movement, sound, and music through learning activities and an object-handling session. This session explores the concepts of rhythm (duration) and tempo, aligning with the aims of the KS1 Music curriculum.

Learning Objectivities

- Identify various types of musical instruments from the RCM Museum collections: Press, Pluck, Blow.
- Explore musical instruments from three distinct families: Strings, Keyboard, and Woodwind.
- Listen to musical examples from the RCM Museum collections and explore the iconic composers of the Renaissance, Baroque, and Classical eras.
- Understand the differences between rhythm and tempo through body movements.



National Curriculum Subject Aim

The national curriculum for music aims to ensure that all pupils:

- perform, listen to, review and evaluate music across a range of historical periods, genres, styles and traditions, including the works of the great composers and musicians.
- understand and explore how music is created, produced and communicated, including through the inter-related dimensions: pitch, *duration*, dynamics, *tempo*, timbre, texture, structure and appropriate musical notations.



Key Stage 2 (Year 3-6, Age 7-11)

Topic: Discovery – How are sound and music made?

Capacity: maximum 30 students

Supervision: 1:6

Cost: £75 (including VAT), up to 5 educators may attend free of charge

Duration/Logistics: 60 mins. Classes will be split into two groups of 15. Each group will rotate after 30mins so that students experience both a Museum Gallery tour and interactive learning activities in the Weston Discovery Centre.

Session Summary: Discover how sound and music are created in a single session by joining the Museum Gallery tour. Students will learn from the RCM Museum collections, enhanced by a storytelling journey, through listening to musical examples and interactive activities. Discover how sound is produced by musical instruments across four distinct families and understand how these instruments generate varying pitches and dynamics. This session explores the KS2 Science of Sound curriculum and aligns with the subject aims of the KS2 Music curriculum.

Learning Objectivities

- Discover how sound is produced by musical instruments from the RCM Museum collections.
- Listen to music examples from the RCM Museum collections and explore the iconic composers of the Renaissance, Baroque, and Classical eras.
- Demonstrate an understanding of musical instruments from four distinct families: Strings, Keyboard, Woodwind, and Percussion.
- Understand the differences between pitch and dynamics through object handling and interactive learning activities.
- ***Bespoke Session (by request):** Learn from the historical copy of the 3D-printed copies recorders in the RCM Museum collections, as well as from the students' recorders. Discover the differences and similarities between Baroque and modern copies.



National Curriculum Subject Aim

The national curriculum for music aims to ensure that all pupils:

- perform, listen to, review and evaluate music across a range of historical periods, genres, styles and traditions, including the works of the great composers and musicians.
- understand and explore how music is created, produced and communicated, including through the inter-related dimensions: *pitch*, duration, *dynamics*, tempo, timbre, texture, structure and appropriate musical notations.

Key Stage 3 & 4 (Year 7-10, Age 11-15)

Topic: Investigate - What happened between the Baroque, Classical, and Romantic periods?

Capacity: maximum 16 students

Supervision: 1:10

Cost: £40 (including VAT), up to 2 educators may attend free of charge

Duration/Logistics: 60 mins. Students will take a full tour of the RCM Museum in the Gallery Space, followed by a learning activity in the Museum's education space, the Weston Discovery Centre.

Session Summary: Students will enjoy a full Museum Gallery tour and learn about the RCM Museum collection in chronological order, where they will listen to and analyse musical examples, investigate the growth and development of the orchestra, and identify compositional and performance stylistic features throughout the timeline of Western Classical of music history.

Learning Objectivities

- Learn the music history timeline through the RCM Museum collection and interacting with more than 500 years of music-making.
- Introduce great composers and musicians by listening to music examples from the RCM Museum collection and analysing their timbre and texture.
- Investigate the story behind the growth and development of the orchestra and musical instruments making.
- Identify compositional and performance stylistic elements by communicating effectively as musicians.



National Curriculum Subject Aim

Key stage 3

The national curriculum for music aims to ensure that all pupils:

- perform, listen to, review and evaluate music across a range of historical periods, genres, styles and traditions, including the works of the great composers and musicians.
- understand and explore how music is created, produced and communicated, including through the inter-related dimensions: pitch, duration, dynamics, tempo, **timbre**, **texture**, structure and appropriate musical notations.

Key stage 4

- recognise links between the integrated activities of performing, composing and appraising and how this informs the development of music
- recognise contrasting genres, styles and traditions of music, and develop some awareness of musical chronology

Key Stage 4 & 5 (Year 11-13, Age 15-18)

Topic: Connect - How has the evolution of musical instruments influenced cultural and societal change?

Capacity: maximum 16 students

Supervision: 1:10

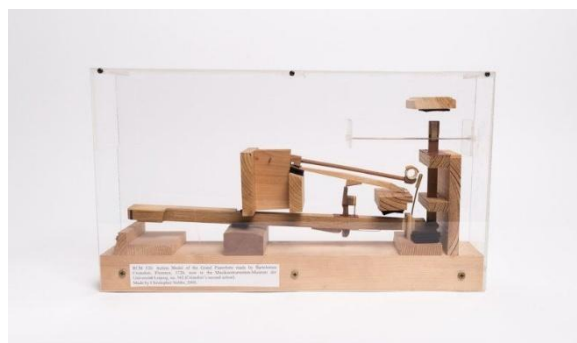
Cost: £40 (including VAT), up to 2 educators may attend free of charge

Duration/Logistics: 60 mins. Students will take a full tour of the RCM Museum in the Gallery Space, followed by a learning activity in the Museum's education space, the Weston Discovery Centre.

Session Summary: Students will enjoy a full tour of the RCM Museum. They will learn about the collection and learn how innovation and technology have shaped the development of musical instruments throughout 500 years of music history, and how they impact society in terms of culture, economics, and knowledge exchange. They will also participate in a hands-on object-handling session with the RCM collections, including one of the earliest piano action models, to explore how the Museum's collection can inform performance practice.

Learning Objectivities

- Describe the evolution of musical instruments and identify key innovations that have influenced their design and functionality.
 - Explore the relationship between technological advancements and changes in musical instrument making, discussing specific examples from the RCM collection.
 - Evaluate the ways in which the evolution of musical instruments has contributed to societal change in areas such as economics, cultural exchange, and knowledge dissemination.
 - Connect their understanding of musical instrument evolution to their own performance practices, reflecting on how historical developments inform contemporary music-making.
 - ***Bespoke Session (by request)** Explore the GCSE setworks through the RCM Museum Collection by examining the development of keyboard instruments:
 - JS Bach - Brandenburg Concerto No. 5 in D - 3rd Movement
 - Beethoven - Piano Sonata no.8 in C Minor 'Pathétique'
- 



National Curriculum Subject Aim

Key stage 4 (& 5)

- recognise *(the interdependence of musical knowledge, understanding and skills, and make)* links between the integrated activities of performing, composing and appraising and how this informs the development of music.
- develop as effective, independent learners *(and as critical and reflective)* tinkers with enquiring minds
- engage with, *(and extend appreciation of)*, the diverse heritage of music in order to promote personal, social, intellectual and cultural development

Where we are

Royal College of Music Museum
Prince Consort Road
London
SW7 2BS

Getting to the RCM:

<https://www.rcm.ac.uk/visit/discover/>

Access Information:

<https://www.rcm.ac.uk/visit/accessinformation/>



Risk Assessment

We provide a risk assessment for school visits at the time of booking, alongside the booking form. However, it is the responsibility of the school to ensure that it is comprehensive for their visit and to perform a separate risk assessment or preview visit if necessary.

Additional Needs

We are committed to ensuring an inclusive and accessible experience for all visitors. We fully support individuals with additional needs and encourage you to indicate any specific requirements on the booking form. Our team is dedicated to making necessary accommodations to enhance your visit, ensuring that everyone can fully participate in our Educational Programme.



Eligible School Sponsorship

The RCM Museum sponsors a portion of the educational programme each academic year for eligible local schools, based on each school's percentage of the national average for free school meals. According to education statistics from gov.uk, the current [national average for free school meals stands at 25.7%](#). We support eligible local schools where the percentage of free school meals exceeds this national average. Please indicate this in the booking form if applicable to your school.

Payment Methods

- Credit or Debit card payments are accepted at the Royal College of Music Museum.
- Invoice's may be provided with the confirmation email upon selection in the booking form. Invoices should be paid within 30 days. If exceeded, the Museum will not accept any further bookings with your school until the invoice is paid.
- The RCM Museum do not accept cash payment for Educational Programmes.

Cancellation Policy

We understand that sometimes plans change. If you need to change your booking, please contact us as soon as possible at museum.programmes@rcm.ac.uk . We can't guarantee that we can accommodate all requests, but we will work with you to facilitate any changes.

If you need to cancel your booking, rather than change your date, the following rates apply:

- 4 weeks' notice, no charge
- 2 - 4 weeks' notice, 50% charge
- less than 2 weeks' notice, full charge

The RCM Museum reserves the right to cancel or reschedule due to unforeseen circumstances. Where possible, we will rearrange your visit, and if cancellation is necessary, we will offer a refund. Please note that we do not accept liability for any additional costs incurred.

Equity, Diversity, Inclusion, and Belonging

The RCM Museum is proud to uphold an Equity, Diversity, Inclusion, and Belonging (EDIB) policy, ensuring that all visitors feel welcome and valued. We actively promote a culture of respect and understanding, recognising the diverse backgrounds and experiences of our community. Our commitment to inclusivity extends to providing the necessary accommodations for individuals. We aim to cultivate a space where every visitor can connect, learn, and thrive, celebrating the rich tapestry of our diverse community.

